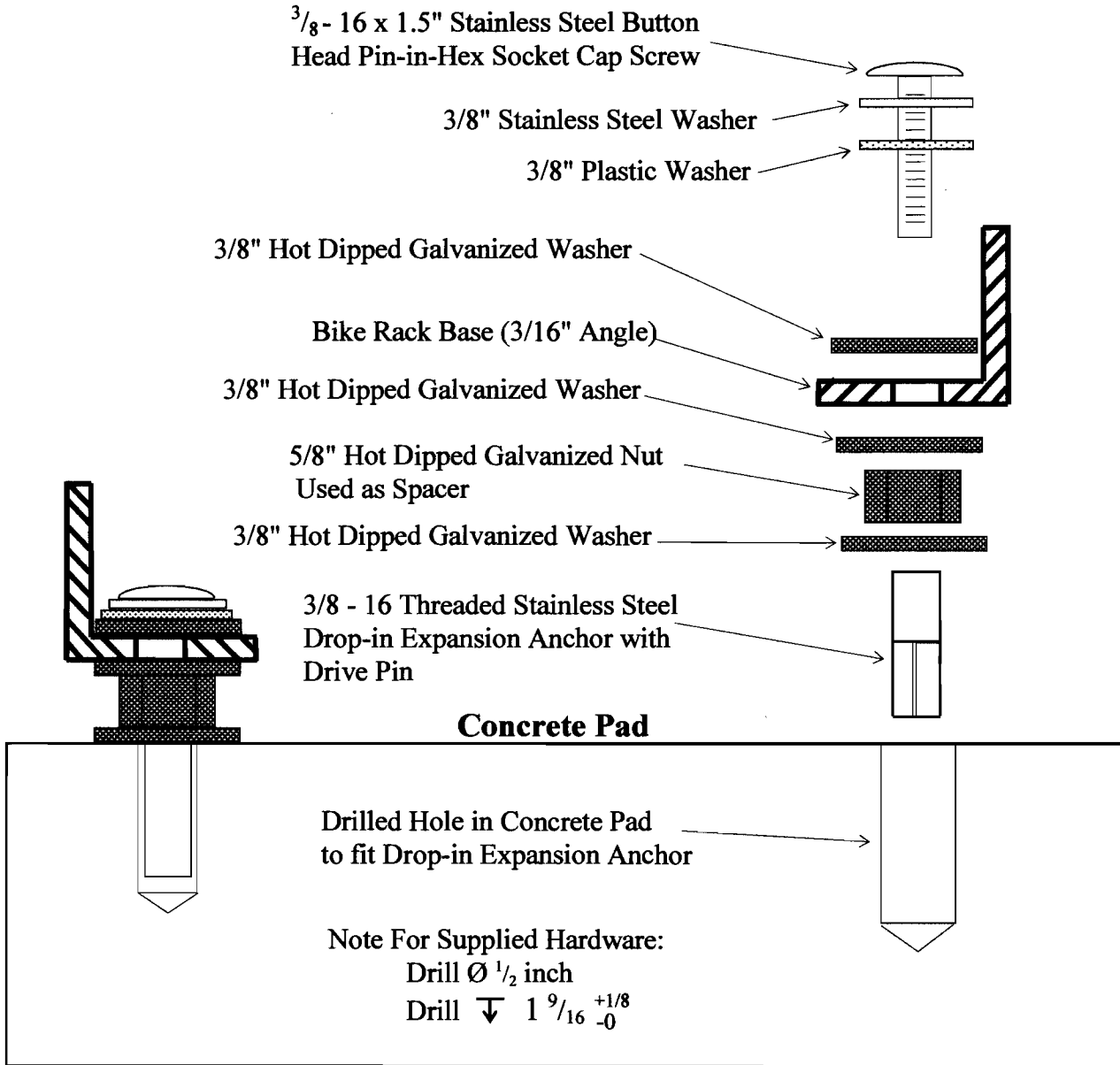


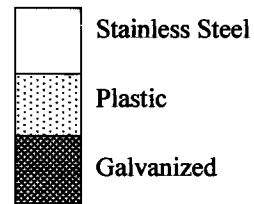
Peak Racks Recommended Mounting Procedure and Instructions for Tamperproof Installation



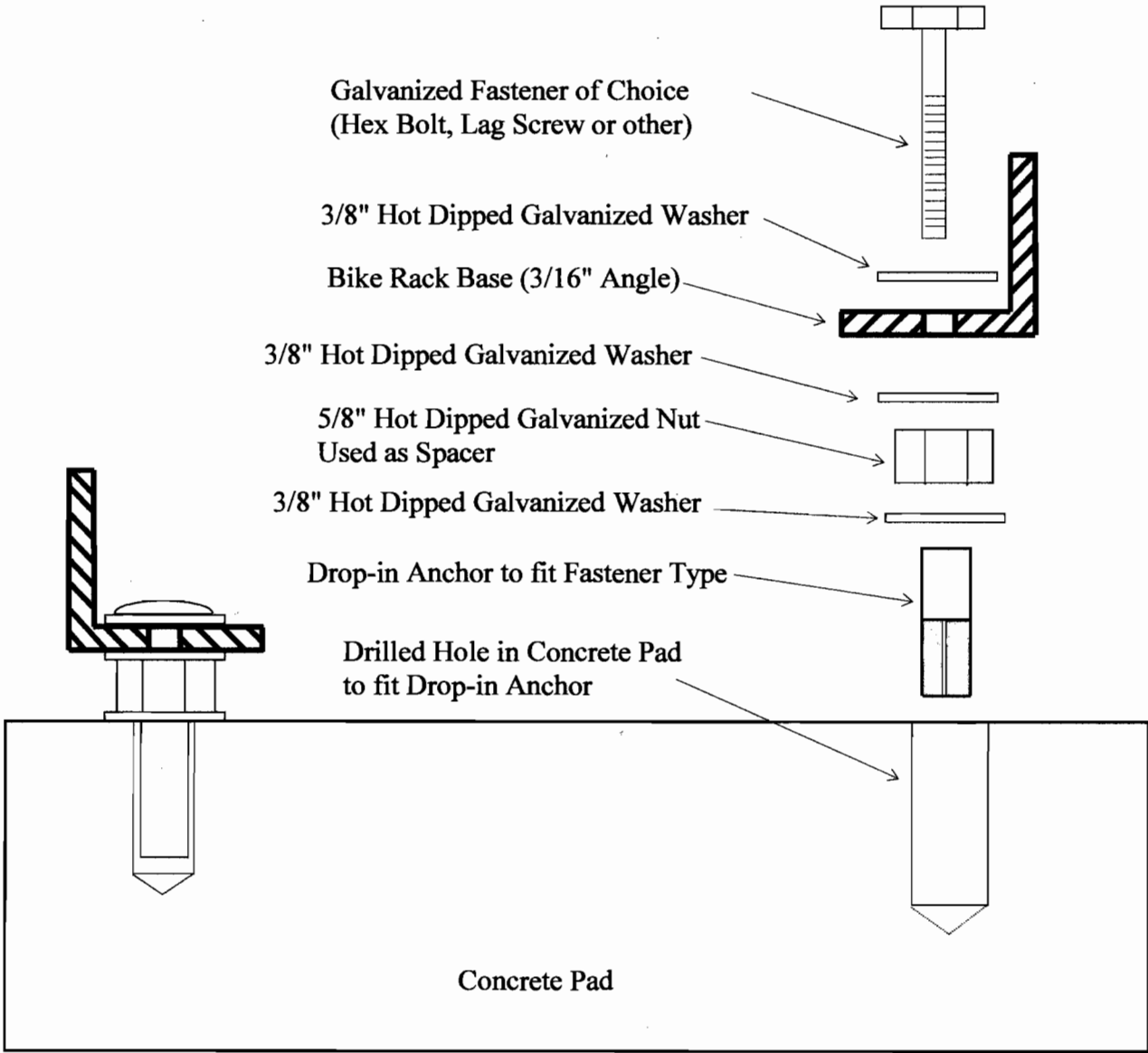
Note: Because drill bit may wander, mark and drill one hole at a time and check rack fit prior to marking and drilling each hole.

Drive Pin must be hammered to expand Anchor.

Call 805-235-8812 for assistance or questions



Peak Racks Recommended Mounting Procedure and Instructions for Non-Tamperproof Installation



Call 805-235-8812 for assistance or questions